

COSTA SUSPENDED FLOOR

INSTALLATION INSTRUCTIONS | AUGUST 2021

IMPORTANT SAFETY INSTRUCTIONS

The luminaire is powered by a built-in 3.7V, 4000mA lithium battery of which the maximum charge current is 5V DC, 800mA. Do not expose the luminaire to fire or to any other heat source. Do not disassemble the battery. Only use the charger supplied by the manufacturer. The light source of this luminaire is replaceable. It takes 5 hours for the luminaire to be fully charged. The luminaire can work continuously for 8 hours after a full charging. When the battery is running empty the luminaire will shut down automatically. The luminaire can be used during the charging process. Charge at least once every three months to maintain battery performance. Do not pull out the connector while the battery is charging as this might damage the battery or reduce its lifetime.

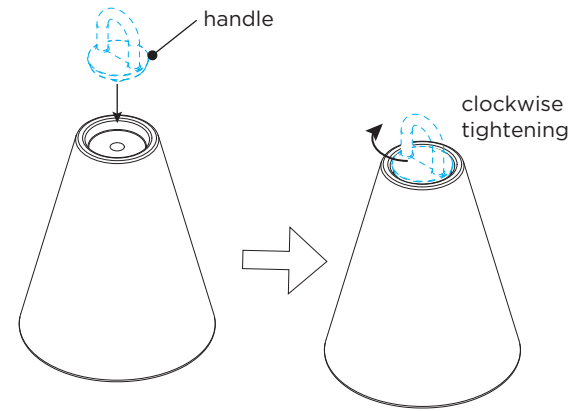
INDICATOR LIGHTS

When the luminaire is charging the red LED indicator is on. When the luminaire is fully charged the red LED indicator will be out and the green LED indicator goes on.

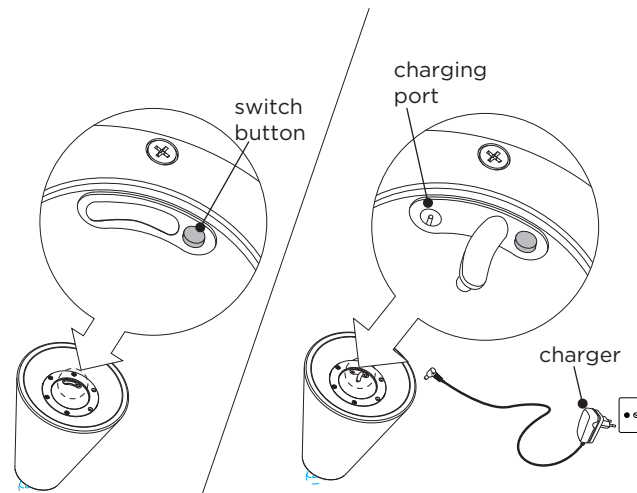
SWITCH ON/OFF AND DIMMING

There is a switch button at the bottom of the luminaire. Press the button to turn on the light and press again to turn off the light. The user can adjust the colour temperature; the range is from 2200K to 4000K. When holding down the button, the colour temperature begins to change gradually. In case of first use, the colour temperature changes from low to high, when the colour temperature changes from 2200K to the highest 4000K, the change will stop. This transition time is about 5 seconds. When the button is released and the colour temperature remains at 4000K. If the colour temperature needs to be adjusted again, repeat the previous method process, this time the colour change will be from high to low. When the colour temperature reaches the lowest 2200K value, the change will stop.

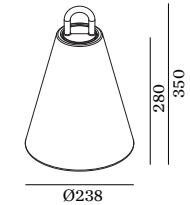
Mounting handle



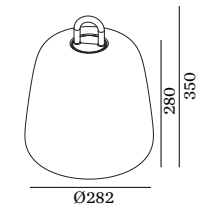
Location of switch button & charging port



DIMENSIONS



SUSPENDED FLOOR 1.0

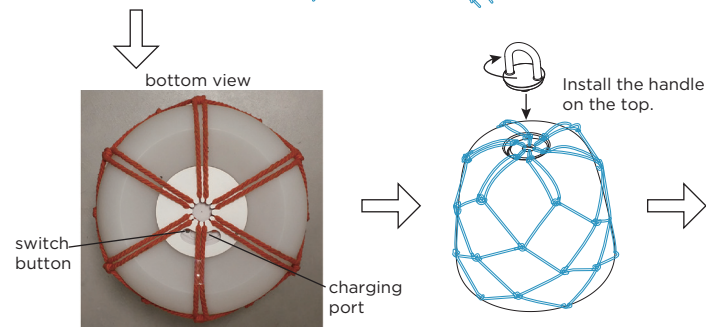
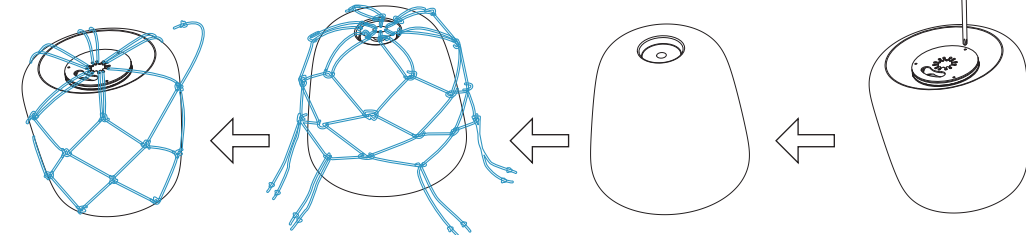
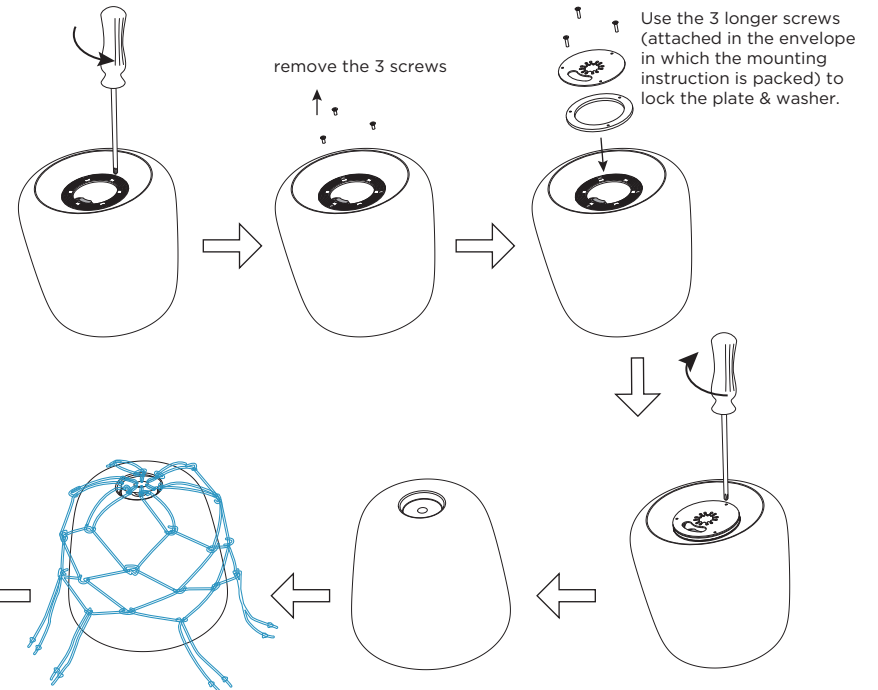
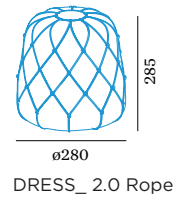
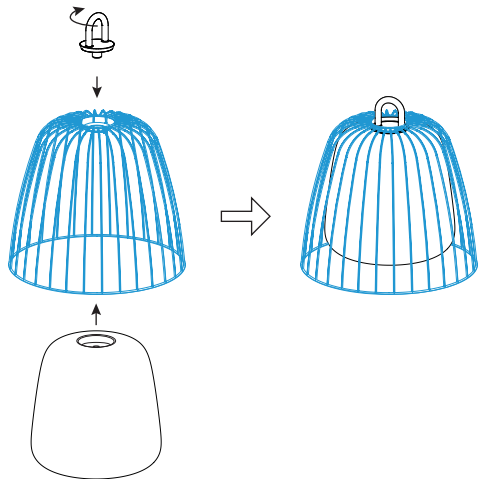
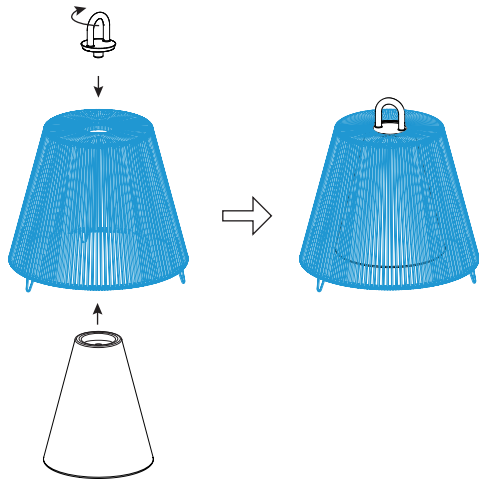


SUSPENDED FLOOR 2.0

COSTA SUSPENDED FLOOR

INSTALLATION INSTRUCTIONS | AUGUST 2021

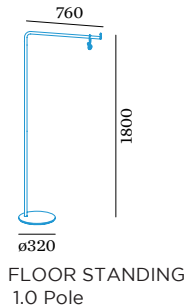
ACCESSORIES



COSTA SUSPENDED FLOOR

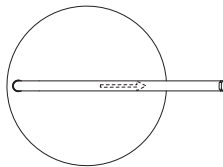
INSTALLATION INSTRUCTIONS | AUGUST 2021

ACCESSORIES



- 1 Mount the the pipe 1 on the pipe 2 by rotating.
- 2 Prepare the washers set and the screw according the diagram. Please pay attention on the location order.
- 3 Tighten the screw in order to reach with the pipe. Before tightening the bracket of the pipe, it must be aligned with the arrow sticker that placed on the base.

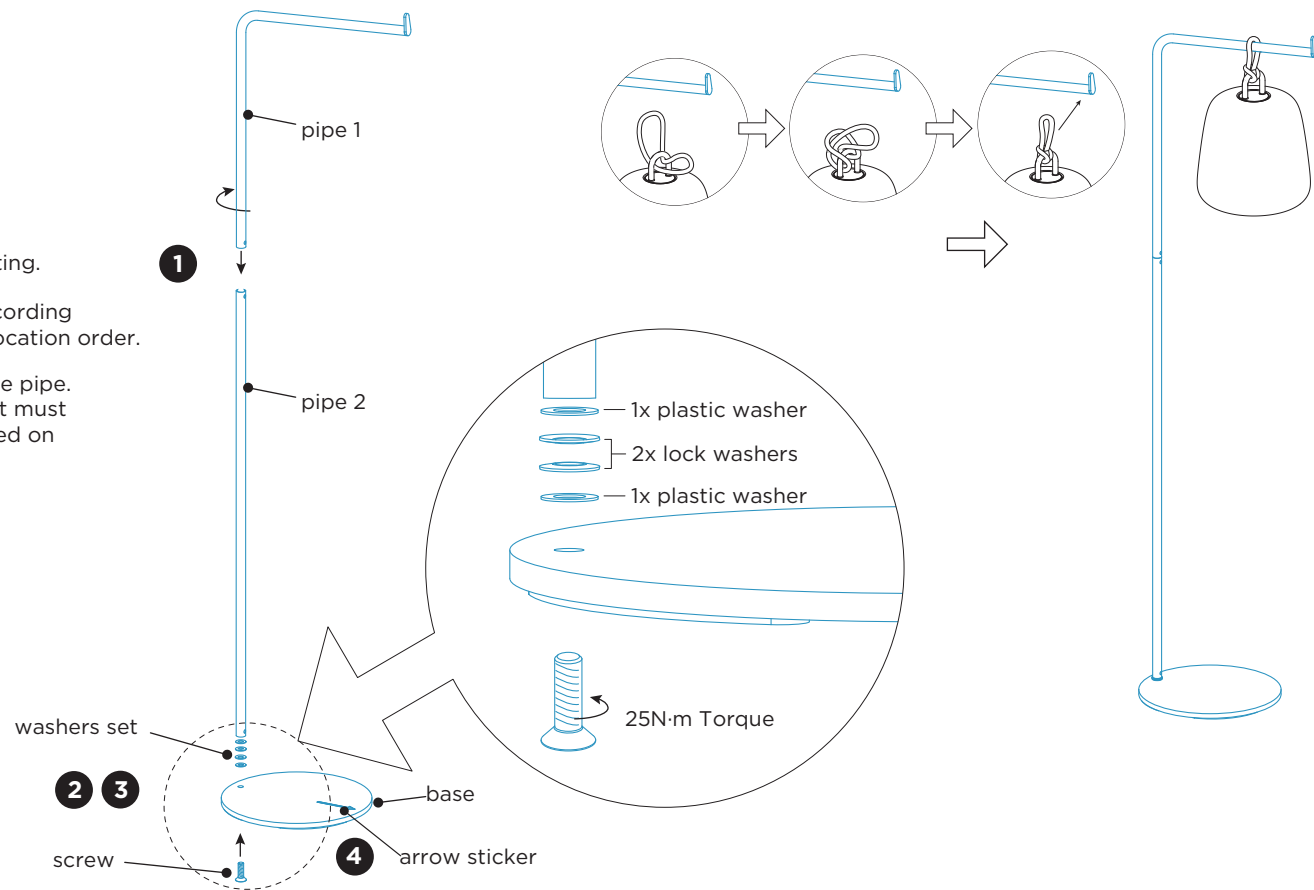
Top view:



- 4 The arrow sticker can be removed.

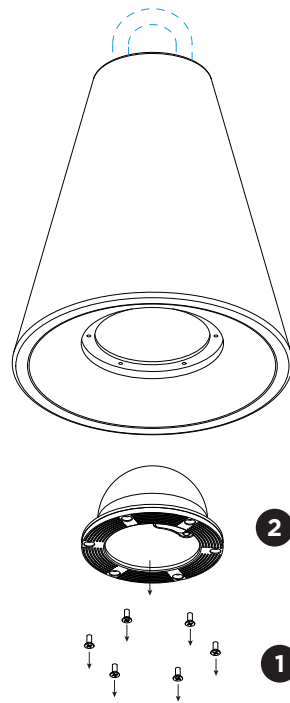


Be careful not to lift the bracket from the top, hold the lower pipe to lift it.



COSTA SUSPENDED FLOOR

INSTALLATION INSTRUCTIONS | AUGUST 2021



DISMOUNTING INSTRUCTIONS

Light source & battery

- 1 Loosen the screws from the fixture on the bottom.
- 2 Remove whole module (including light source, driver & battery all together in one.)

This luminaire contains a light source with the energy class B