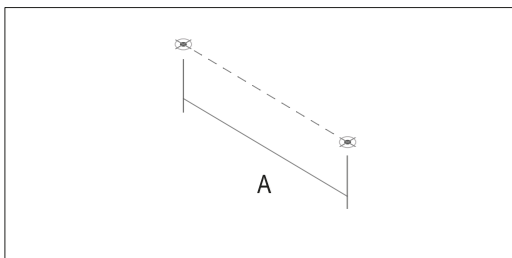


A LUMINAIRE INSTALLATION

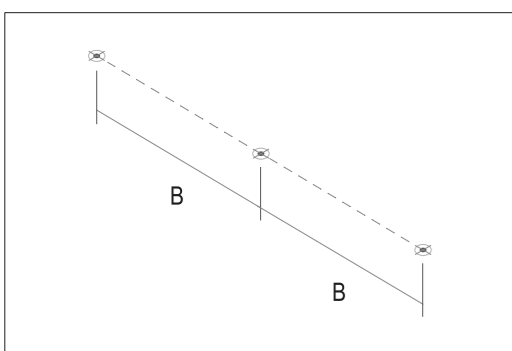
INSTALACIÓN DE LA LUMINARIA / INSTALLAZIONE DELLA LAMPADA /
 INSTALLATION DER BELEUCHTUNG / INSTALLATION DU LUMINAIRE /
 INSTALAÇÃO DO APARELHO DE ILUMINAÇÃO / 照明器具の設置・取り付け /
 灯具的安装 / МОНТАЖ ОСВЕТИТЕЛЬНОГО ПРИБОРА /
 شامدلدى ОРНАТУ / تركيب وحدة الإضاءة

TM	A (mm)	B (mm)	C (mm)
1000	970	985	1000
1500	1470	1485	1500
2000	1970	1985	2000
2500	2470	2485	2500
3000	2970	2985	3000

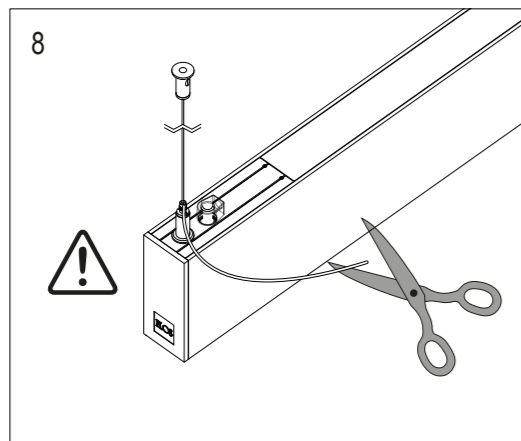
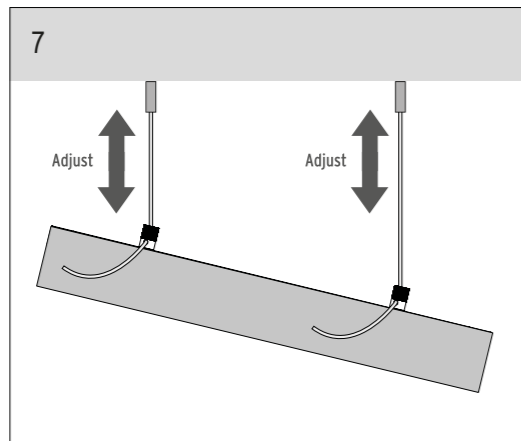
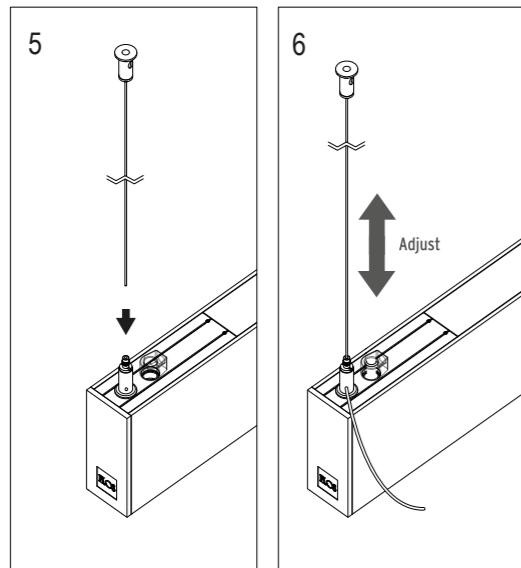
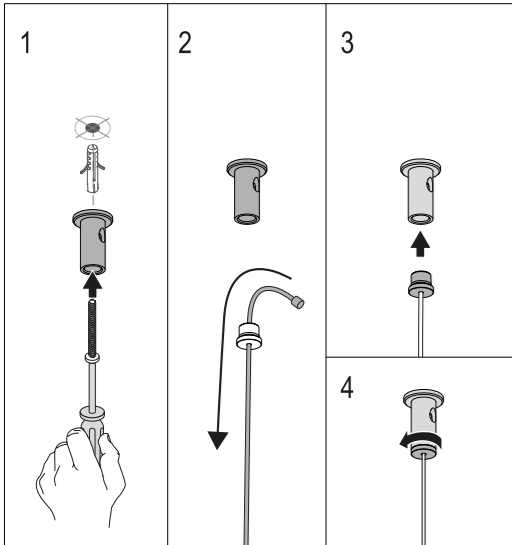
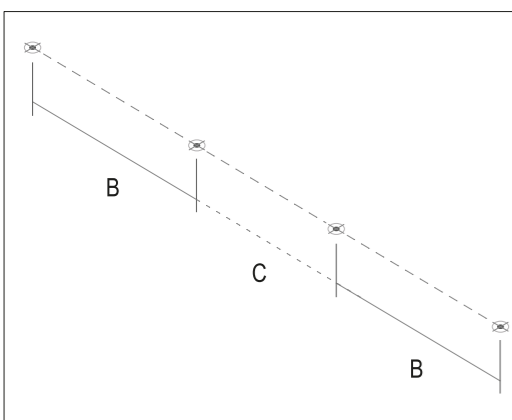
ONE PROFILE



TWO PROFILES



MORE THAN THREE PROFILES



B ELECTRICAL CONNECTION

CONEXIÓN ELÉCTRICA / CONNESSIONE ELETTRICA / ELEKTRISCHER ANSCHLUSS / CONNEXION ÉLECTRIQUE / LIGAÇÃO ELÉCTRICA / のコネクション / 電力连接 / ЭЛЕКТРИЧЕСКОЕ ПОДКЛЮЧЕНИЕ / ЭЛЕКТРЛІК БАЙЛАНЫС / التوصيل الكهربائي

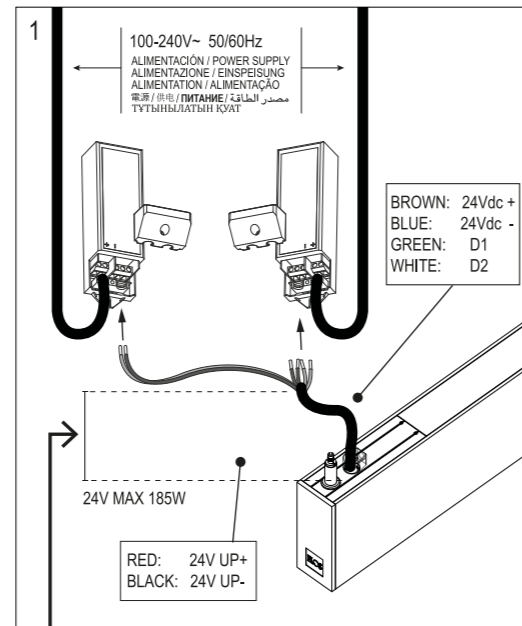
EUR VERSION

MAX
 Constant voltage 24V 185W / 8A
 Protections:
 Short circuit / Overload / Over voltage
 UP Version: 24V 8,2W/m

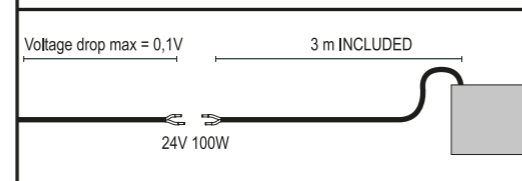
US VERSION

USE ONLY WITH REMOTE CLASS 2 ACCESSIBLE LISTED DRIVER SUITABLE FOR RECESSED, MAX 100W

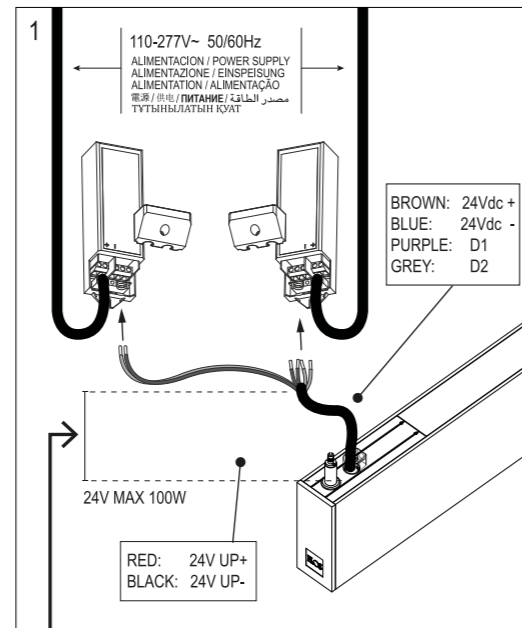
FEED PROFILE (EUR VERSION)



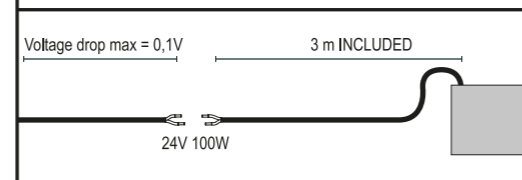
Calculate cable section



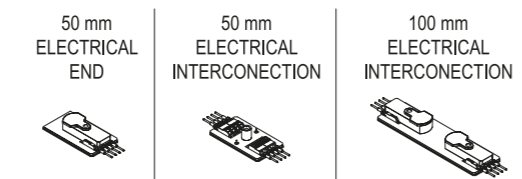
FEED PROFILE (US VERSION)



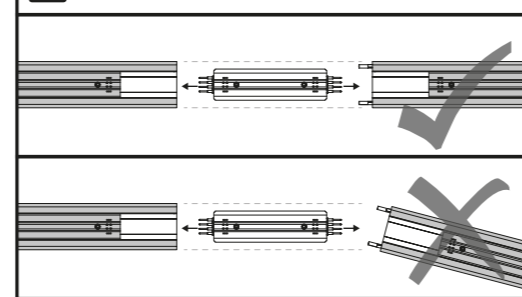
Calculate cable section



ELECTRICAL INTERCONNECTION

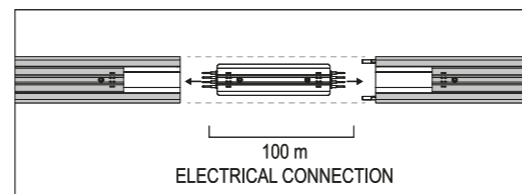


Connection between profiles

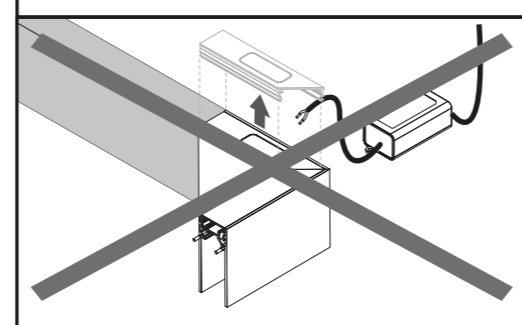


NO CUT PROFILE

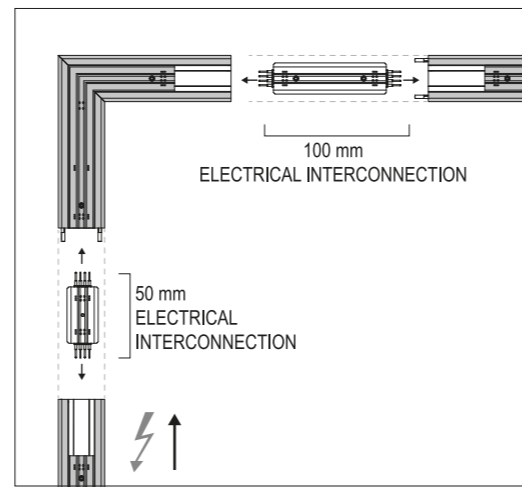
CONNECTION BETWEEN PROFILES



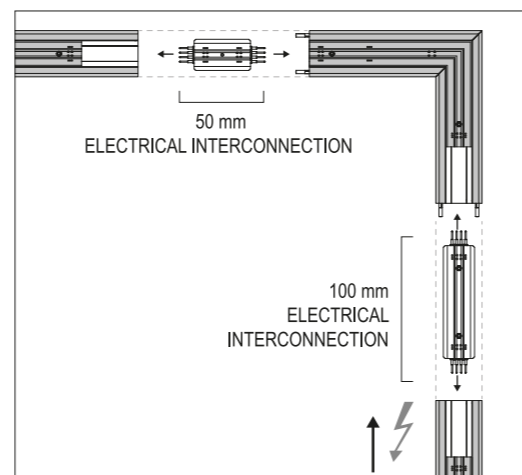
WARNING! No Feed Corner Profile



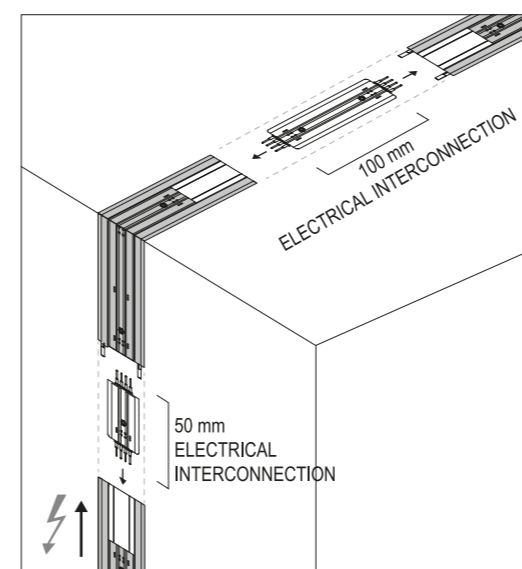
90° CORNER - NO CUT PROFILE - RIGHT DIRECTION



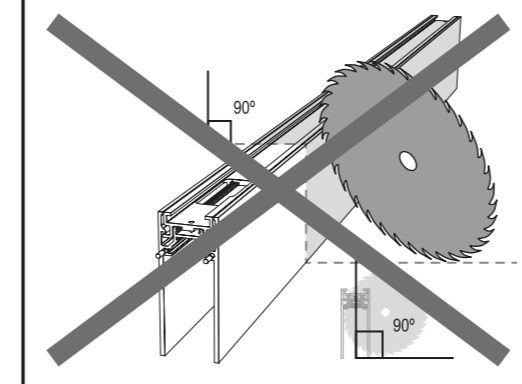
90° CORNER - NO CUT PROFILE - LEFT DIRECTION



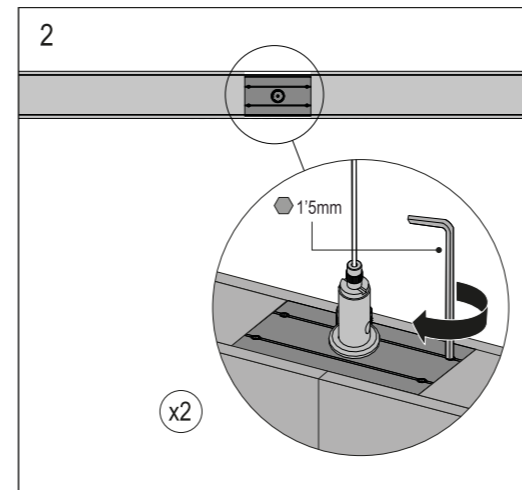
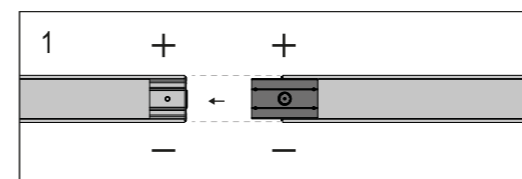
INNER CORNER / OUTER CORNER - NO CUT PROFILE



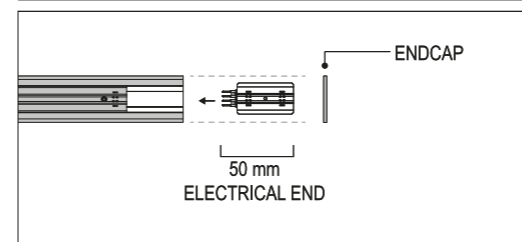
WARNING! NO CUT PROFILE



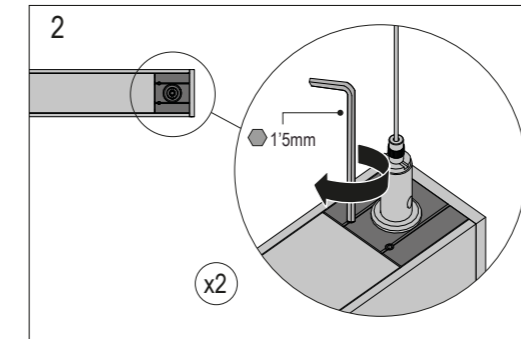
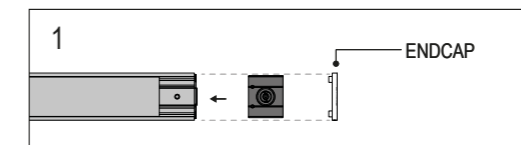
SUSPENSION INTERCONNECTION KIT



FINAL PROFILE

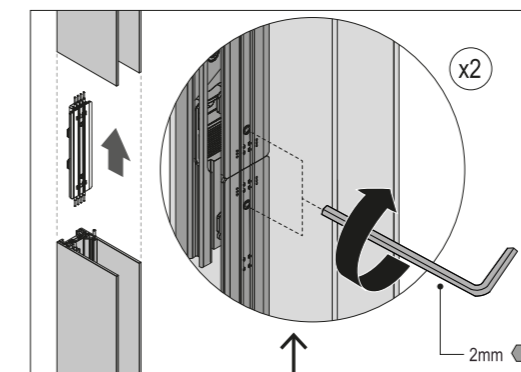
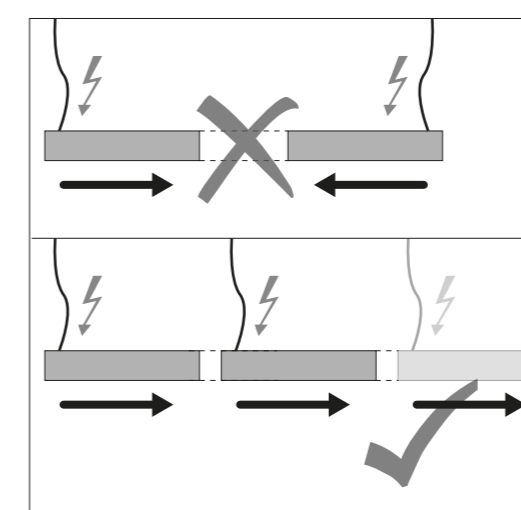


SUSPENSION END KIT

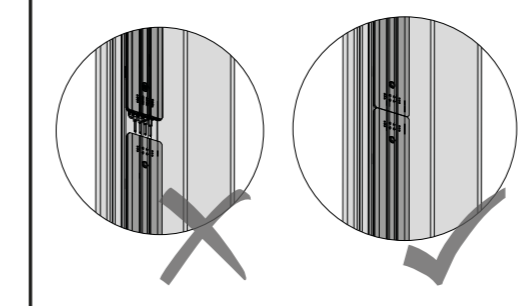


ASSEMBLING JOINING

RECOMMEND FEED PROFILE CONNECTION



WARNING



In order to get a better finish of the track elements, Flos recommends to use a silicon or similar sealing product of the same color of the profiles, to fill up the slight gap that may exist between joined elements.

DIMENSION CONVERSION TABLE

mm	inch
50	1,96"
60	2,36"
75	2,95"
100	3,93"
115	4,52"
150	5,9"
30	11,81"

FEED PROFILE

	mm	inch
06.1614.14	1000	39,37"
06.1615.14	1500	59,05"
06.1616.14	2000	78,74"
06.1617.14	2500	98,42"
06.1618.14	3000	11,81"

INTERMEDIO

Reference	mm	inch
06.1619.14	1000	39,37"
06.1620.14	1500	59,05"
06.1621.14	2000	78,74"
06.1622.14	2500	98,42"
06.1623.14	3000	11,81"

Reference	mm	inch
06.1624.XX	153 x 153	6,02" x 6,02"

mm	inch	A mm	A inch
1000	39,37"	970	38,18"
1500	59,05"	1470	57,87"
2000	78,74"	1970	77,55"
2500	98,42"	2470	97,24"
3000	11,81"	2970	116,92"

B mm	B inch	C mm	C inch
985	38,77"	1000	39,37"
1485	58,46"	1500	59,05"
1985	78,14"	2000	78,74"
2485	97,83"	2500	98,42"
2985	117,51"	3000	11,81"