



WEVER & DUCRÉ  
LIGHTING

# BOX mini on track 1.0

258165BB3

Project

Type

Notes

Quantity

Date

## GENERAL

Ceiling

Track

Jet Black

Adapter Jet Black

Housing + Inner Reflector Jet Black

IP20

Interior

490 lm

## LED

2700 K

## OPTICAL

Flood

## PHYSICAL

Length 70 mm

Width 70 mm

Height 82 mm

0.2 kg

171 (adapter)mm

## ELECTRICAL

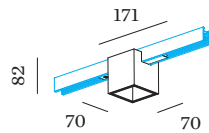
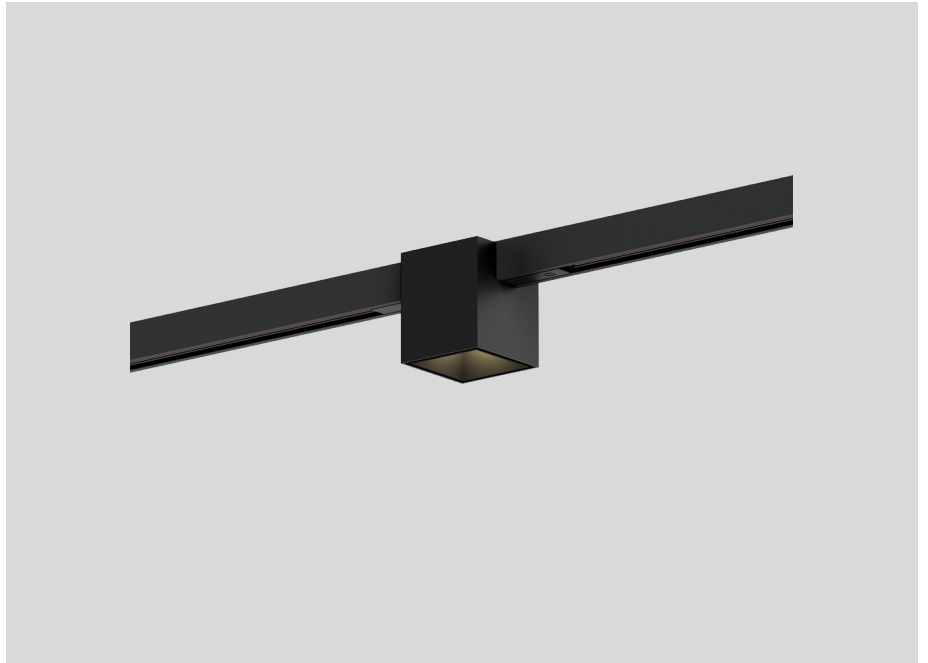
DALI dim

48 V

Total connected power 7 W

PC3

Safety distance 0.3 m





WEVER & DUCRÉ  
LIGHTING

# BOX

## mini on track 1.0

258165BB3

### ELECTRICAL

#### Track Profile 2m | STREX

TYPE	COLOUR	L · W · H (MM)	ORDERCODE
48V DALI   suspended indirect light	Jet Black	2000-26-29	9 0 0 1 4 0 B 5
48V DALI   suspended indirect light	Signal White	2000-26-29	9 0 0 1 4 0 W 5
48V DALI   surface/suspended	Signal White	2000-26-29	9 0 0 1 4 1 8 3
48V DALI   surface/suspended	Jet Black	2000-26-29	9 0 0 1 4 1 8 4
48V DALI   recessed	Signal White	2000-37-33	9 0 0 1 4 1 8 9
48V DALI   recessed	Jet Black	2000-37-33	9 0 0 1 4 1 9 0
48V DALI   suspended indirect light   custom cut	Jet Black	1001-1999-26-29	9 0 0 1 4 0 B 5 C C
48V DALI   suspended indirect light   custom cut	Signal White	1001-1999-26-29	9 0 0 1 4 0 W 5 C C
48V DALI   surface/suspended   custom cut	Signal White	1001-1999-26-29	9 0 0 1 4 1 8 3 C C
48V DALI   surface/suspended   custom cut	Jet Black	1001-1999-26-29	9 0 0 1 4 1 8 4 C C
48V DALI   recessed   custom cut	Signal White	1001-1999-37-33	9 0 0 1 4 1 8 9 C C
48V DALI   recessed   custom cut	Jet Black	1001-1999-37-33	9 0 0 1 4 1 9 0 C C

#### End Cap | STREX

TYPE	COLOUR	L · W · H (MM)	ORDERCODE
48V DALI   surface/suspended	Signal White	26-2.5-29	9 0 0 1 4 1 4 7
48V DALI   surface/suspended	Jet Black	26-2.5-29	9 0 0 1 4 1 4 8
48V DALI   recessed	Signal White	37-10-27	9 0 0 1 4 1 4 9
48V DALI   recessed	Jet Black	37-10-27	9 0 0 1 4 1 5 0

#### Power Feed | STREX

TYPE	COLOUR	L · H (MM)	ORDERCODE
48V DALI	Signal White	112-18	9 0 0 1 4 1 5 3
48V DALI	Jet Black	112-18	9 0 0 1 4 1 5 4

#### Suspension Set | STREX

TYPE	COLOUR	L · W · H (MM)	ORDERCODE
48V DALI   1.5m   suspended	stainless steel	80-23-1500	9 0 0 1 4 1 6 0
48V DALI   3.0m   suspended	stainless steel	80-23-3000	9 0 0 1 4 1 6 1
48V DALI   1.5m   suspended	Jet Black	80-23-1500	9 0 0 1 4 2 7 4
48V DALI   3.0m   suspended	Jet Black	80-23-3000	9 0 0 1 4 2 7 5

#### Power Supply 100W | STREX

TYPE	COLOUR	L · W · H (MM)	ORDERCODE
48V DALI   incl. DALI wiring   surface	Signal White	439-26-44	9 0 0 1 4 1 6 6
48V DALI   incl. DALI wiring   surface	Jet Black	439-26-44	9 0 0 1 4 1 6 7
48V DALI   incl. DALI wiring   suspended	Signal White	439-26-44	9 0 0 1 4 1 6 8
48V DALI   incl. DALI wiring   suspended	Jet Black	439-26-44	9 0 0 1 4 1 6 9
48V DALI   incl. DALI wiring   suspended	Signal White	439-26-44	9 0 0 1 4 2 6 0
48V DALI   incl. DALI wiring   suspended	Jet Black	439-26-44	9 0 0 1 4 2 6 1
48V DALI		350-30-18	9 0 2 1 8 9 0 1

[258165BB3] The technical data represent rated values for an ambient temperature of 25°C. The data values for the luminous flux are initially subject to a tolerance of +/- 10%, those for the electrical connected load are initially subject to a tolerance of +/- 10%, and those for the colour temperature are initially subject to a tolerance of +/- 150 K. No liability is assumed for typographical or printing errors. The general terms and conditions of Wever & Ducré BVBA apply.  
© Wever & Ducré BVBA · Spinnerijstraat 99/21 · 8500 Kortrijk · Belgium · www.weverducre.com



WEVER & DUCRÉ  
LIGHTING

# BOX mini on track 1.0

258165BB3

## Power Supply 150W | STREX

TYPE	COLOUR	L · W · H (MM)	ORDERCODE
48V DALI   incl. DALI wiring   surface	Signal White	439-26-44	9 0 0 1 4 1 7 0
48V DALI   incl. DALI wiring   surface	Jet Black	439-26-44	9 0 0 1 4 1 7 1
48V DALI   incl. DALI wiring   suspended	Signal White	439-26-44	9 0 0 1 4 1 7 2
48V DALI   incl. DALI wiring   suspended	Jet Black	439-26-44	9 0 0 1 4 1 7 3
48V DALI   incl. DALI wiring   suspended	Signal White	439-26-44	9 0 0 1 4 2 6 2
48V DALI   incl. DALI wiring   suspended	Jet Black	439-26-44	9 0 0 1 4 2 6 3
48V DALI		350-30-18	9 0 2 1 8 9 0 2

## Track Profile 1m | STREX

TYPE	COLOUR	L · W · H (MM)	ORDERCODE
48V DALI   surface/suspended	Signal White	1000-26-29	9 0 0 1 4 1 8 1
48V DALI   surface/suspended	Jet Black	1000-26-29	9 0 0 1 4 1 8 2
48V DALI   recessed	Signal White	1000-37-33	9 0 0 1 4 1 8 7
48V DALI   recessed	Jet Black	1000-37-33	9 0 0 1 4 1 8 8
48V DALI   surface/suspended   custom cut	Signal White	200-999-26-29	9 0 0 1 4 1 8 1 C C
48V DALI   surface/suspended   custom cut	Jet Black	200-999-26-29	9 0 0 1 4 1 8 2 C C
48V DALI   recessed   custom cut	Signal White	200-999-37-33	9 0 0 1 4 1 8 7 C C
48V DALI   recessed   custom cut	Jet Black	200-999-37-33	9 0 0 1 4 1 8 8 C C

## Track Profile 3m | STREX

TYPE	COLOUR	L · W · H (MM)	ORDERCODE
48V DALI   surface/suspended	Signal White	3000-26-29	9 0 0 1 4 1 8 5
48V DALI   surface/suspended	Jet Black	3000-26-29	9 0 0 1 4 1 8 6
48V DALI   recessed	Signal White	3000-37-33	9 0 0 1 4 1 9 1
48V DALI   recessed	Jet Black	3000-37-33	9 0 0 1 4 1 9 2
48V DALI   suspended indirect light	Jet Black	3000-26-29	9 0 0 1 4 1 B 5
48V DALI   suspended indirect light	Signal White	3000-26-29	9 0 0 1 4 1 W 5
48V DALI   surface/suspended   custom cut	Signal White	2001-2999-26-29	9 0 0 1 4 1 8 5 C C
48V DALI   surface/suspended   custom cut	Jet Black	2001-2999-26-29	9 0 0 1 4 1 8 6 C C
48V DALI   recessed   custom cut	Signal White	2001-2999-37-33	9 0 0 1 4 1 9 1 C C
48V DALI   recessed   custom cut	Jet Black	2001-2999-37-33	9 0 0 1 4 1 9 2 C C
48V DALI   suspended indirect light   custom cut	Jet Black	2001-2999-26-29	9 0 0 1 4 1 B 5 C C
48V DALI   suspended indirect light   custom cut	Signal White	2001-2999-26-29	9 0 0 1 4 1 W 5 C C

## Mounting Bracket | STREX

TYPE	ORDERCODE
48V DALI   recessed	9 0 0 1 4 1 9 3

## Wireless Control | STREX

TYPE	COLOUR	L · H (MM)	ORDERCODE
48V DALI	Signal White	143-58	9 0 0 1 4 1 9 4
48V DALI	Jet Black	143-58	9 0 0 1 4 1 9 5

[258165BB3] The technical data represent rated values for an ambient temperature of 25°C. The data values for the luminous flux are initially subject to a tolerance of +/- 10%, those for the electrical connected load are initially subject to a tolerance of +/- 10%, and those for the colour temperature are initially subject to a tolerance of +/- 150 K. No liability is assumed for typographical or printing errors. The general terms and conditions of Wever & Ducré BVBA apply.  
© Wever & Ducré BVBA · Spinnerijstraat 99/21 · 8500 Kortrijk · Belgium · www.weverducre.com



WEVER & DUCRÉ  
LIGHTING

# BOX mini on track 1.0

258165BB3

## Connector | STREX

TYPE	COLOUR	L · H (MM)	ORDERCODE
48V DALI	Signal White	105-18	9 0 0 1 4 1 9 6
48V DALI	Jet Black	105-18	9 0 0 1 4 1 9 7

## L-Connector | STREX

TYPE	COLOUR	L · W · H (MM)	ORDERCODE
48V DALI   surface/suspended	Signal White	105-105-18	9 0 0 1 4 1 9 8
48V DALI   surface/suspended	Jet Black	105-105-18	9 0 0 1 4 1 9 9
48V DALI   recessed	Signal White	105-105-18	9 0 0 1 4 2 5 1
48V DALI   recessed	Jet Black	105-105-18	9 0 0 1 4 2 5 2

## L-Connector non-electrical | STREX

TYPE	COLOUR	L · W · H (MM)	ORDERCODE
48V DALI   recessed	Signal White	105-105-18	9 0 0 1 4 2 5 6
48V DALI   recessed	Jet Black	105-105-18	9 0 0 1 4 2 5 7
48V DALI   surface/suspended	Signal White	105-105-18	9 0 0 1 4 2 5 8
48V DALI   surface/suspended	Jet Black	105-105-18	9 0 0 1 4 2 5 9

## DALI Selv Device | STREX

TYPE	L · W · H (MM)	ORDERCODE
48V DALI	213-37-25	9 0 0 1 9 1 9 3

## Power Supply 250W | STREX

TYPE	L · W · H (MM)	ORDERCODE
48V DALI	400-40-22	9 0 2 1 8 9 0 3