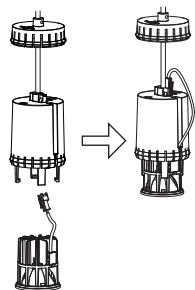


RAY & HEXO SUSPENDED on track (1-phase)

INSTALLATION INSTRUCTIONS | JANUARY 2021

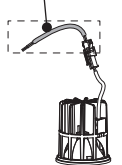
install the LED module / lamp

1 mount LED module:

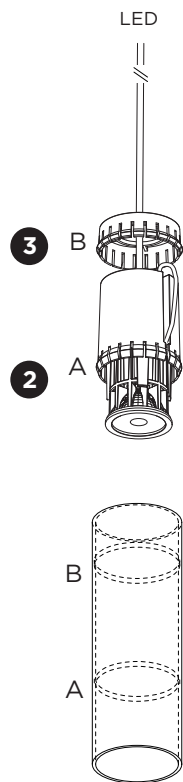
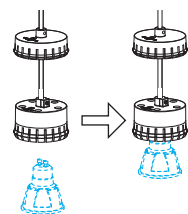


* For this product, the cable with a plug that comes with the LED module is not needed. Please remove it first and then use the LED module.

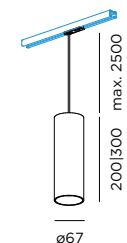
not needed



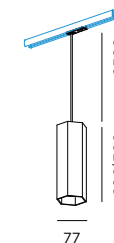
1 mount PAR16 lamp:



DIMENSIONS



RAY 2.0 | 3.0
LED
PAR16



HEXO 2.0 | 3.0
LED
PAR16

MOUNTING INSTRUCTION

- 1** FOR LED: mount the LED module into the suspension set.
FOR PAR16: insert the lamp.
- 2** Insert part A until it clicks in the lower part of the cover.
- 3** Insert part B until it clicks in the upper part of the cover.

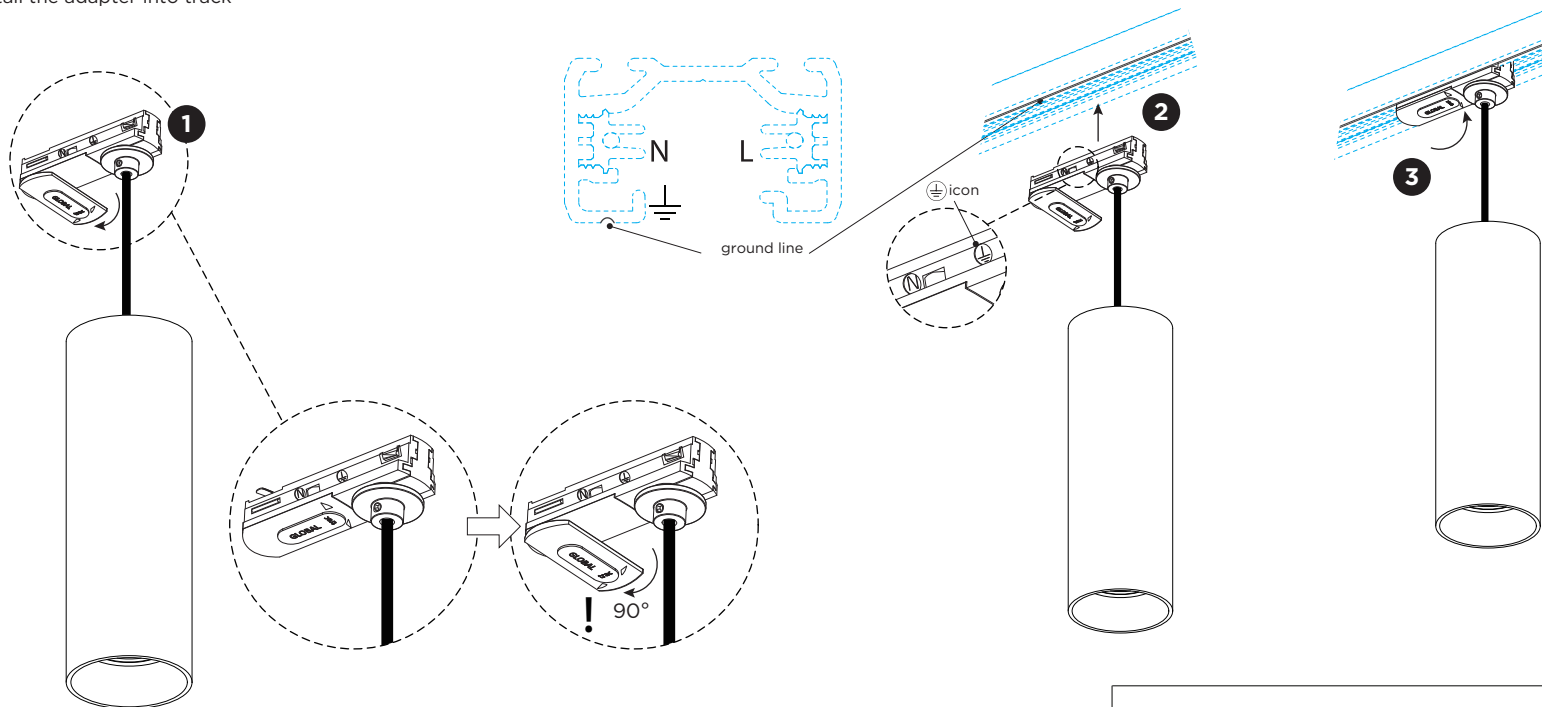
For how to install the adapter into track, please see the page2.

PB19-010-730-00_v0

RAY & HEXO SUSPENDED on track (1-phase)

INSTALLATION INSTRUCTIONS | JANUARY 2021

install the adapter into track



MOUNTING INSTRUCTION

- 1 Turn the adapter's handle 90° as illustrated.
- 2 Push the adapter into the track. Make sure the ⊕ icon on the inside of the adapter is faced towards the track side with the **ground line** craved in it.
- 3 Turn the handle back into the original position to lock the adapter in the track.

For how to shorten the cable length to the required length, please see the page 3.

RAY & HEXO SUSPENDED on track (1-phase)

INSTALLATION INSTRUCTIONS | JANUARY 2021

Shorten the cable length to the required length.

